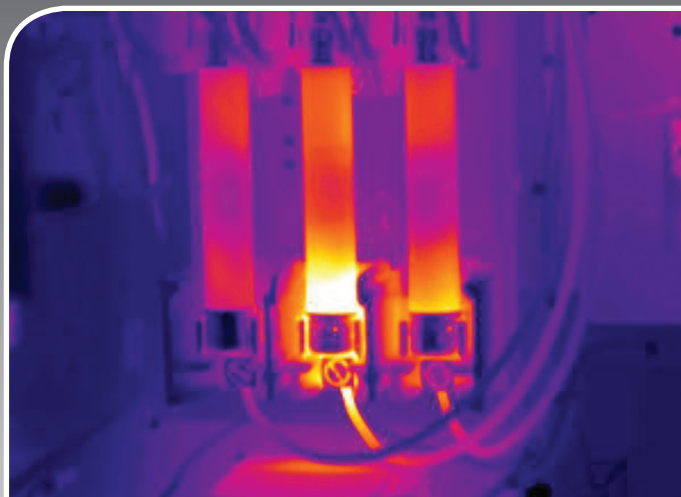


# THERMAL IMAGING REPORTS



## Thermal Imaging Reports

Electrical equipment and components deteriorate over time, and these faults are not always noticeable or detected by conventional methods contained in routine maintenance or periodic inspections. For instance, joints and connectors may become loose or oxidised resulting in degradation of the insulating properties. This could be caused by general aging, environmental conditions, excessive loading or imbalances of electrical loads within the system.

Degradation of the electrical system can lead to:

- Decreased efficiency
- Increased running costs.
- Increased downtime
- Higher repair costs.
- Greater risk of electrical fires.
- Damage to assets.
- Inflated insurance premiums (in some cases).

Identifying excessive heat loss or overloading in an energised system with the aid of thermal imaging is a non-invasive method of highlighting areas at risk before they fail completely. This form of inspection provides an effective method of fault diagnosis that offers minimal interference to the operation of the business. Complementing the traditional testing and tagging procedures, a thermal imaging report can identify specific areas requiring maintenance, allowing the customer to schedule and budget for the remedial action, hence reducing costs and downtime.

We recommend thermal image testing for the following items:

- Switchboards
- Plant
- High voltage equipment
- Items which are costly to shut down

Our general procedure is to:

- Inspect the items to be tested and take a range of infrared photos.
- Compile a report including photos of the equipment which highlights hot spots and heat loss that may indicate the need for repairs / maintenance.
- Assess the risk level associated with those hazards.
- Provide appropriate recommendations to manage the risk

Call Mabi today for an obligation free quote and be assured that you are partnered with a company that has:

- Vast experience in the strata industry;
- Conducted thousands of strata inspections and reports;
- A Registered Building Licence and Master Builders membership;
- Qualified and courteous staff; and
- Full public liability and professional indemnity insurance.

***Are you at risk?***

***Don't hesitate call us today for peace of mind.***



Asbestos, Safety & Building Consultants



T: 1300 762 295 E: [info@mabi.com.au](mailto:info@mabi.com.au)  
PO Box 6194, Wantirna, Vic 3152

[www.mabi.com.au](http://www.mabi.com.au)